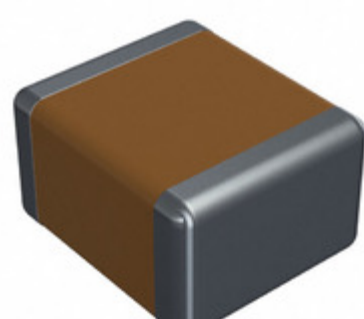


2220CC154MAT1A



Part Number: [2220CC154MAT1A](#)
Manufacturer: [AVX Corporation](#)
Description: CAP CER 0.15UF 630V X7R 2220
Data sheet: [High Voltage MLC Chips](#)

RoHS Status: Lead free / RoHS Compliant
Ship From: Hong Kong
Shipment Way: DHL/Fedex/TNT/UPS/EMS

Images are for reference only.
 See Product Specifications for product details.
 Buy 2220CC154MAT1A with confidence from
 Component-World.HK, 1 Year Warranty

[Request For Quotation](#)

PRODUCT PARAMETER

Part Number	2220CC154MAT1A	Manufacturer	AVX Corporation	
Description	CAP CER 0.15UF 630V X7R 2220	Lead Free Status / RoHS Status	Lead free / RoHS Compliant	
Quantity Available	74034 pcs	Data sheet	High Voltage MLC Chips	
Category	Capacitors	Voltage - Rated	630V	
Tolerance	±20%	Thickness (Max)	0.130" (3.30mm)	
Temperature Coefficient	X7R	Size / Dimension	0.224" L x 0.197" W (5.70mm x 5.00mm)	
Series	-	Ratings	-	
Packaging	Tape & Reel (TR)	Package / Case	2220 (5750 Metric)	
Operating Temperature	-55°C ~ 125°C	Mounting Type	Surface Mount, MLCC	
Moisture Sensitivity Level (MSL)	1 (Unlimited)	Manufacturer Standard Lead Time	20 Weeks	
Lead Style	-	Lead Spacing	-	
Lead Free Status / RoHS Status	Lead free / RoHS Compliant	Height - Seated (Max)	-	
Features	High Voltage	Failure Rate	-	
Detailed Description	0.15µF ±20% 630V Ceramic Capacitor X7R 2220 (5750 Metric)		Capacitance	0.15µF
Applications	General Purpose			

Component-World.com is a Reliable Stocking Distributor of Electronic Components. We specialize in all AVX Corporation series electronic components. We have 74034 pieces of AVX Corporation 2220CC154MAT1A in stock available now. Request a quote from electronics components distributor at Component-World.com, our sales team will contact you within 24 hours.

RFQ Email: info@Components-World.com

RELATED PRODUCTS

	Part#: 2220CC183MAT1A Description: CAP CER 0.018UF 630V X7R 2220	Manufacturers: AVX Corporation	RFQ
	Part#: 2220CC104MAT1A Description: CAP CER 0.1UF 630V X7R 2220	Manufacturers: AVX Corporation	RFQ
	Part#: 2220CC222KAT1A Description: CAP CER 2200PF 630V X7R 2220	Manufacturers: AVX Corporation	RFQ
	Part#: 2220CB1 Description: CASTER BASE ASSY	Manufacturers: Belden	RFQ
	Part#: 2220CC224MAT1A Description: CAP CER 0.22UF 630V X7R 2220	Manufacturers: AVX Corporation	RFQ
	Part#: 2220CC103KAT1A Description: CAP CER 10000PF 630V X7R 2220	Manufacturers: AVX Corporation	RFQ
	Part#: 2220CC154KAT9A Description: CAP CER 0.15UF 630V X7R 2220	Manufacturers: AVX Corporation	RFQ
	Part#: 2220CC224MAJ1A Description: CAP CER 0.22UF 630V X7R 2220	Manufacturers: AVX Corporation	RFQ
	Part#: 2220CC224KAT1A Description: CAP CER 0.22UF 630V X7R 2220	Manufacturers: AVX Corporation	RFQ
	Part#: 2220CA102KAT1A Description: CAP CER 1000PF 630V NP0 2220	Manufacturers: AVX Corporation	RFQ
	Part#: 2220CC224KAZ1A Description: CAP CER 0.22UF 630V X7R 2220	Manufacturers: AVX Corporation	RFQ
	Part#: 2220CC103MAT1A Description: CAP CER 10000PF 630V X7R 2220	Manufacturers: AVX Corporation	RFQ
	Part#: 2220AC563MAT1A Description: CAP CER 0.056UF 1KV X7R 2220	Manufacturers: AVX Corporation	RFQ
	Part#: 2220CC154KAT1A Description: CAP CER 0.15UF 630V X7R 2220	Manufacturers: AVX Corporation	RFQ
	Part#: 2220CC104KAT1A Description: CAP CER 0.1UF 630V X7R 2220	Manufacturers: AVX Corporation	RFQ
	Part#: 2220CC124KAT1A Description: CAP CER 0.12UF 630V X7R 2220	Manufacturers: AVX Corporation	RFQ
	Part#: 2220CC224KAT9A Description: CAP CER 0.22UF 630V X7R 2220	Manufacturers: AVX Corporation	RFQ
	Part#: 2220CC223MAT1A Description: CAP CER 0.022UF 630V X7R 2220	Manufacturers: AVX Corporation	RFQ
	Part#: 2220CC224KAJ1A Description: CAP CER 0.22UF 630V X7R 2220	Manufacturers: AVX Corporation	RFQ
	Part#: 2220CC224MAZ1A Description: CAP CER 0.22UF 630V X7R 2220	Manufacturers: AVX Corporation	RFQ

Related keywords for 2220CC154MAT1A

AVX Corporation 2220CC154MAT1A	2220CC154MAT1A distributor	2220CC154MAT1A supplier	2220CC154MAT1A price
2220CC154MAT1A download datasheet	2220CC154MAT1A datasheet	2220CC154MAT1A stock	buy 2220CC154MAT1A
AVX Corporation 2220CC154MAT1A	AVX Corporation [MIL] 2220CC154MAT1A		